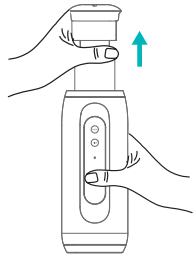


Please read carefully before use and keep it properly.

We supply warranty within 12 months after purchase date for all qualified machines.

◇ Operation

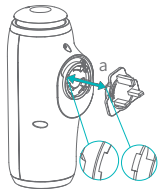


① Take out the atomizer head and essential oil bottle

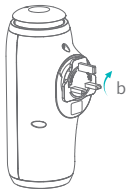


② Rotate the oil bottle out clockwise direction, fill the oil then rotate the bottle back in anti-clockwise direction.

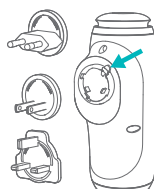
a Align and press down
b rotate the plug clockwise



③ Align the power plug bump with the device notch and press it tightly (such as A), rotate clockwise into the device, attach a foam pad under the plug, and select a suitable position to insert the socket



④ Replace the national standard plug: press the button by the arrow shown in the diagram, and at the same time rotate counterclockwise to remove the plug to replace other plugs



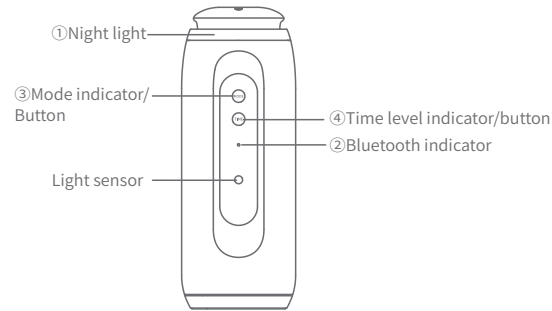
◇ Parameter

· Size: 66×116×190mm	· Weight: 0.35Kg
· Voltage: AC 100~240V	· Capacity: 100ml
· Power: 1.5W	· Coverage: 100m ³

◇ Packing

Scent diffuser ×1, plug ×1, oil bottle ×1, foam pads ×1, user manual ×1

◇ Indicator light & buttons



① Night light:

On	When the ambient brightness is below the threshold, the light turns on
Off	When the ambient brightness is above the threshold, the light turns off

② Bluetooth indicator(blue):

Off	Bluetooth is not connected; When the Bluetooth connection is disconnected, the buzzer rings twice
On	Bluetooth is connected; When the Bluetooth is successfully connected, the buzzer rings twice
Flashes twice	When the APP update configuration information is received, the buzzer rings twice

③ Mode indicator:

Off	Shutdown state
Green	Fixed mode 1: pause for 180s, work for 15s
Yellow	Fixed mode 2: pause for 120s, work for 15s
Red	Fixed mode 3: pause for 60s, work for 15s
Blue	Bluetooth mode: work according to the parameters configured by the APP (as long as the Bluetooth is connected, it switch from fixed mode to Bluetooth mode immediately. If you need to return to fixed mode, you need to manually switch by pressing the button)

④ Time level indicator:

Off	The current mode aligns with the APP settings or shutdown
Green	When in fixed mode, it is scheduled to shut down for 1 hour
Blue	When in fixed mode, it is scheduled to shut down for 2 hour
Yellow	When in fixed mode, it is scheduled to shut down for 4 hour
Red	When in fixed mode, it is scheduled to shut down for 8 hour

⑤ Mode Button:

Short press: switch the mode level, and the buzzer will make a short sound
Press and hold for 2 seconds: on/off, the buzzer make a long sound

⑥ Time level button:

Short press: - fixed mode: switch the time level, the buzzer sounds shortly, re-time after switching, and automatically shut down after the timing time is reached.-APP mode: This button is not functional and the corresponding indicator light is off
Press and hold for 2 seconds: turn on/off the night light, and the buzzer will make a long sound

Tilting alarm function: When the device is powered on, the buzzer rings when the device tilts more than 45°

◇ Bluetooth Setting

◇ Home

Mobile phone scan code to download and install "Scent Tech", start the APP, complete the beginner's guide, select Bluetooth mode to enter the home page, at this time the available devices column displays the available Bluetooth devices that have been plugged in within the Bluetooth range, click to select the available devices to enter the status page.

Tip: App permission configuration, including location services, Bluetooth connection, and sending notifications are allowed.

◇ Status page

- Status window: Displays the current working mode parameters and status, including time, day, Bluetooth connection status (gray when Bluetooth is not connected), etc.

- Operation status: the mobile phone can turn on/off the device operation with one button;

- Working Mode: Displays the currently running working mode

- Device Address: After the device is successfully configured with the network, the network location address is obtained.

- Click More in the top right corner: Rename device.

◇ Mode settings

Click the working mode bar to enter the mode setting, you can set 5 groups of working modes respectively, click any mode bar to customize the day, timing power on and off time period, gear setting, etc.

- Week settings: Customize the work days of the week.

- Time period number: Customize the time period that needs to be scented.

Note: It cannot be set across days (the end time cannot be less than the start time), if you need to set the work across 00:00, set the continuous time period at both ends respectively, for example, you need to set 23:00-02:00 work, respectively set to 23:00-23:59, 00:00-02:00 two groups.

- Working level setting: The spatial fragrance concentration can be adjusted (by controlling the frequency of fragrance spraying).



APP download

◇ device maintenance

If the diffuser is not used for a long time, 95% industrial alcohol should be added into the refined oil bottle to clean the nozzle and other parts inside the diffuser. Tip: Maintain the diffuser with 95% industrial alcohol at least every 1-2 months.

Specific operation: add 95% industrial alcohol into the empty bottle, turn on the diffuser and run for 10-15 minutes after, then turn off the diffuser and pour the alcohol, then screw back the bottle to machine.

◇ Warranty

1.The Warranty is suitable for new machine but not reselled or second hand products.

2.Within 12 months after purchase date, Warranty is offered for all qualified machines. During warranty, we will offer repair services and the free parts but not include essential oil.

3.The warranty card & purchase Invoice are needed if after-sales service is required. Please contact us within warranty if any problems.

4.The following is not suitable for free warranty service:

① Damage & problems caused by Accidents & Fire.

② Not used properly and wrong operation.

③ Repaired by the unprofessional and cause some parts damaged.

④ Damaged during transportation.

⑤ Without our warranty card.

⑥ Without proper cleaning for a long time

⑦ The machine work time out.

⑧ Machines & Parts not from us.

⑨ Machines not purchased from official sales channels.

⑩ Send the machines back without permit from manufacturer.

◇ Notice

1. Please carefully read the Instruction before installation, and keep the User manual to check if need at anytime

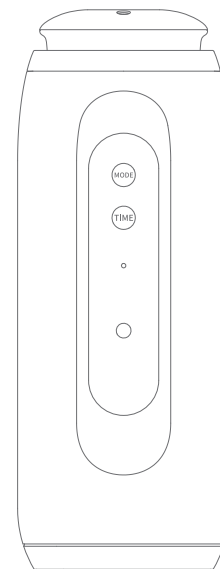
2. Please make sure the machine upright, no leaking and no down; or may damage the device and parts

3. Please do not use the broken power wire and make sure the power supply is suitable for the machine, or may cause fire.

4. Please do not open the machine by yourself, If problems, please contact us promptly.

HOME SMART SCENT DIFFUSER

WITH SOCKET



User manual

Please read the manual carefully and keep it properly before use